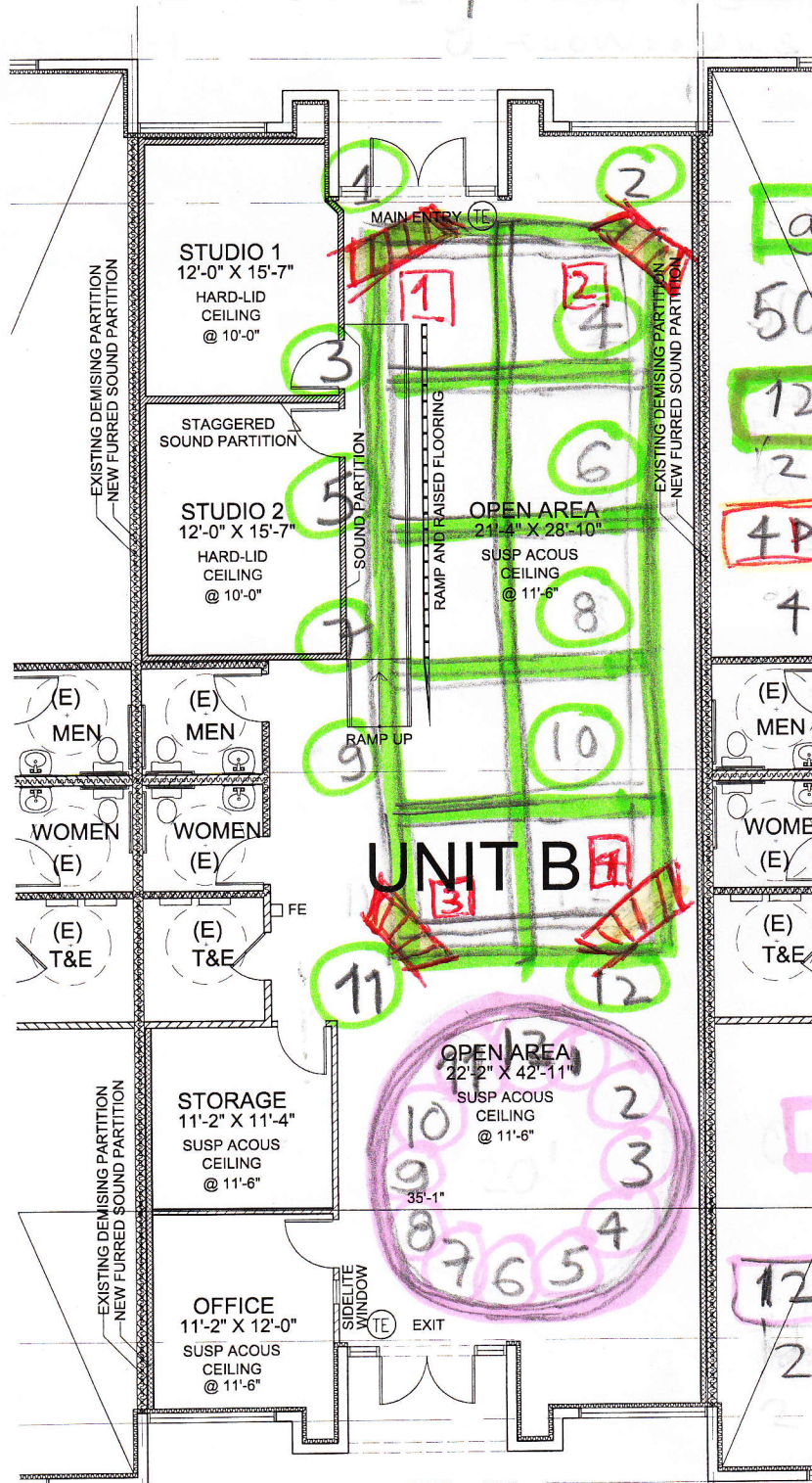


EARS - Open Studio



grid:
50' x 20'

12 speakers
2 subwoofers

4 PA speakers
4 subwoofers

Total:
28 speakers
8 subwoofers

circle:
20'

12 speakers
2 subwoofers

NOTE: WINDOWS IN THE STUDIOS SHALL BE CUSTOM MADE WOOD FRAMED WITH THREE ANGLED SOUND RATED INSULATED GLASS.

NEW FURRED SOUND PARTITION TO +12'-0" AFF W/ 3-5/8" MTL STUDS, INSULATION & 5/8" TYPE 'X' GYPSUM BOARD.

NEW SOUND PARTITION TO +12'-0" AFF W/ 3-5/8" MTL STUDS, INSULATION & ONE LAYER OF 5/8" TYPE 'X' GYP BD ON EACH SIDE.

NEW STAGGERED STUD SOUND PARTITION TO +12'-0" AFF W/ 3-5/8" MTL STUDS, INSULATION & ONE LAYER OF 5/8" TYPE 'X' GYP BD ON EACH SIDE.